

## 1970-05-00

### FAKTA

Dokumenttype:  
Postkort

Sprog:  
Dansk

Afsendersted:  
Düsseldorf

Afsenderinfo (lakstempel, adresse  
m.m.):  
Bei Konrad Fischer  
Düsseldorf  
Neubrückstr. 12

Modtagersted:  
Askeby

Modtagerinfo (udskrift, tilskrift m.m.):  
Henning Christiansen  
Bakkehøjgård  
4792 Askeby

Omtalte personer:  
Richard Long

Arkivplacering:  
HC arkiv Møn/HC breve 7

### DOKUMENTINDHOLD

Invitation til udstillingen "Richard Long", Bei Konrad Fischer, 11. maj-9.  
juni 1970

### TRANSSKRIFTION

EINE SKULPTUR VON RICHARD LONG  
BEI KONRAD FISCHER  
DÜSSELDORF, NEUBRÜCKSTR. 12 TEL. 321464  
11. MAI – 9. JUNI 1970  
MO.-FR. 11-13, 15-18 SAMSTAG 11-13 UHR

Village Bay, St. Kilda, Western Isles

The inhabitants of this remote outpost were evacuated to the Scottish  
mainland in 1930. The village is on Hirta, the largest of the St. Kilda group,  
which has spectacular cliff scenery. The remains of the village are  
preserved by The National Trust for Scotland to whom St. Kilda was  
bequeathed in 1957. The Nature Conservancy also has an interest in  
preserving the unique wild life

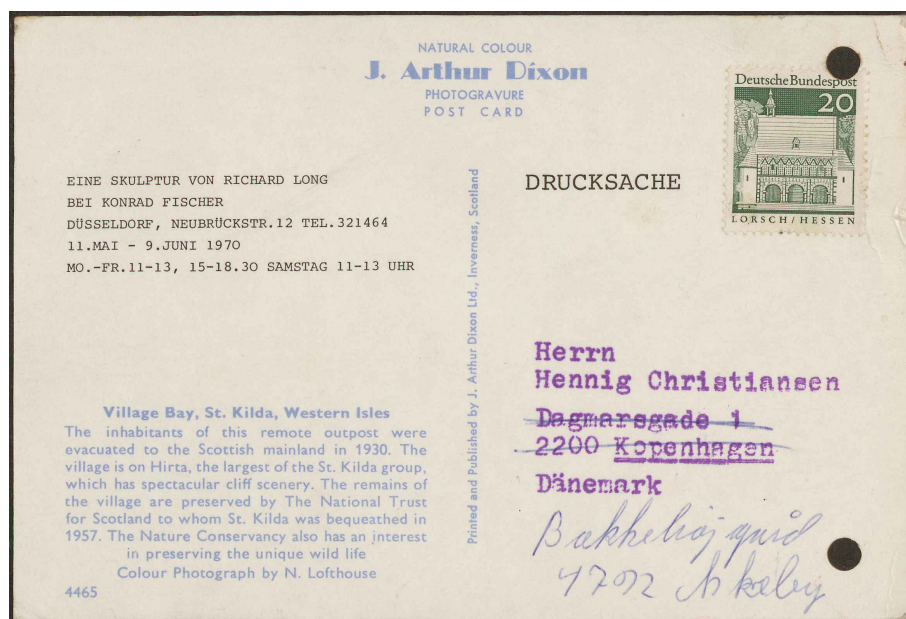
Colour Photograph by N. Lofthouse  
4465

### DRUCKSACHE

Herrn  
Henning Christiansen  
Dagmarsgade 1  
2200 Kopenhagen  
Dänemark  
Bakkehøjgård  
4792 Askeby

KILDER TIL  
DANSK  
KUNSTHISTORIE

NY CARLSBERGFONDET



**KILDER TIL  
DANSK  
KUNSTHISTORIE**  
NY CARLSBERGFONDET

